

# NORTH WEST FORKTRUCKS

## Used Forklift Specialists

---

Reliable Diesel, LPG & Electric Forklifts Ready for Work.



[www.northwestforktrucks.co.uk](http://www.northwestforktrucks.co.uk)

[info@northwestforktrucks.co.uk](mailto:info@northwestforktrucks.co.uk)

0151 922 9245

# ABOUT US

North West Forktrucks is a family-run business based in Liverpool, UK, with over 30 years of experience in the material handling industry. Our roots in the forklift trade date back to the late 1980s, providing the knowledge, expertise, and industry insight that continue to drive our business today.

We specialise in supplying, trading, and exporting quality material handling equipment, providing reliable and cost-effective forklifts to customers across the UK and worldwide. With full loading facilities and trusted delivery partners, we ensure every machine is transported safely and efficiently to its destination.

## Brochure Contents

- Diesel Forklifts (Page 6-7)
- LPG Forklifts (Page 8-9)
- Electric Forklifts (Page 10-11)



## Come and Browse

We offer a wide range of forklifts for all needs and budgets. Stock changes daily, so contact us for current availability or visit us to view our latest machines.



### Trade & Export Used Sales

Full loading facilities, transport world-wide, multi truck discounts. Export documentation available within 24-48 hours including T1, EX1 & EUR1.

### End User Sales

Delivery to your door, LOLER tests, warranty, part exchange, Finance deals.

# TOP BRANDS FOR LESS

North West Forktrucks stocks a wide range of forklifts and material handling equipment from leading manufacturers including Toyota, Linde, Hyster, Mitsubishi, Yale, Doosan, and many more.




## Inspection & Preparation

Our fully equipped onsite workshop inspects, services, and prepares forklift trucks to help ensure they are ready for their next application. Every machine undergoes pre-delivery checks before leaving our premises.

Grow Your Fleet With North West Forktrucks

Scan the QR code to start today



Scan Me!



# SECOND HAND NOT SECOND BEST

At North West Forktrucks, quality doesn't end with brand-new equipment. Our second-hand trucks are thoroughly inspected and prepared to deliver reliable, day-in, day-out performance at a smarter price. Each machine offers solid value and dependable strength, giving you a cost-effective option that's ready to go.

## Why Choose a Used Forklift?

A used forklift can be one of the most practical investments your business can make. Modern machines are built for durability, meaning a well-maintained pre-owned truck can still deliver excellent performance and efficiency for years. Choosing used allows you to upgrade your fleet faster, reduce costs, and access proven, reliable equipment without compromising on quality.



## Finding the Right Machine

Choosing the right forklift starts with understanding the demands of your operation. The loads being handled, working environment, and available space all influence the best machine for the job. Selecting the right equipment can improve productivity, reduce downtime, and maximise long-term value. Our experienced sales team is on hand to guide you through the process.

## OUR STOCK

Explore our wide range of quality used stock, from diesel, LPG and electric forklifts to attachments, access platforms, and warehouse equipment. All machines are carefully prepared and ready for reliable day-to-day performance.



### Diesel Forklifts

Built for outdoor use and demanding lifting tasks.



### LPG Forklifts

Versatile forklifts for both indoor and outdoor use.



### Electric Forklifts

Ideal for indoor use with quiet, efficient operation.



### Forklift Attachments

Expand capability with forklift attachments.



### Access Platforms

Reliable access solutions for working at height.

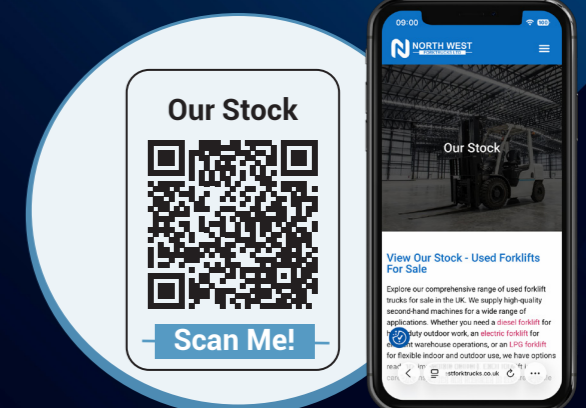
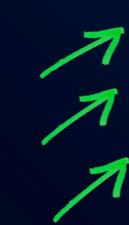


### Warehouse Equipment

Warehouse equipment for everyday handling tasks.

Browse our range of dependable forklifts, ready for fast delivery and built for every job.

[info@northwestforktrucks.co.uk](mailto:info@northwestforktrucks.co.uk)



# DIESEL FORKLIFTS

Our second-hand diesel forklifts offer reliable performance for demanding applications. Each machine is carefully inspected and prepared for work, providing a cost-effective solution for businesses across the UK and worldwide. Browse our current stock online or contact our sales team for more information.



## 5 Reasons to Choose Diesel

Diesel forklifts are a cornerstone of heavy-duty material handling. Built for power and endurance, they deliver reliable performance in demanding outdoor environments, offering the torque and stability needed to keep operations running efficiently.

1. High Torque Output

2. Rugged Construction

3. Fuel Efficiency

4. Versatility

5. Proven Reliability

## HEAVY MACHINERY

We supply 7,000kg to 50,000kg forklift trucks to trade and public customers, with expert advice for high-capacity needs, supporting UK container and dockside operations. Most heavy-duty equipment comes with standard forks, with reach stackers and container handlers available on request.



DIESEL

### Did You Know?

Well-maintained diesel forklifts can operate efficiently for thousands of hours beyond their first lifecycle, making them one of the most cost effective material handling solutions available today.



## FAQs

Not sure about diesel? Here are some common questions.

What are diesel forklifts best used for?

Outdoor heavy-duty work in construction and industrial yards.

How often should I service a diesel forklift?

Daily checks plus regular scheduled maintenance.

Can I use a diesel forklift indoors?

Only in well ventilated areas due to exhaust fumes.

Why choose diesel over electric?

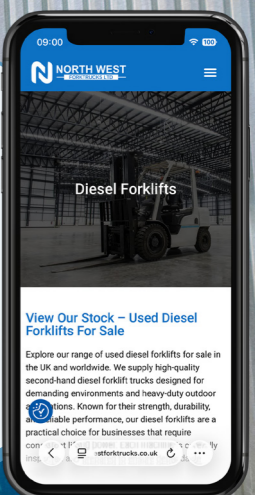
More power, longer run time, and better rough terrain performance.



View Diesel Forklifts



Scan Me!



# LPG FORKLIFTS

We offer a wide range of second-hand LPG forklifts, providing versatile performance for indoor and outdoor applications. Carefully prepared and ready for work, our stock offers a practical and economical handling solution. Browse our current stock online or contact our sales team for more information.



## 5 Reasons to Choose LPG

LPG forklifts offer versatile performance for indoor and outdoor use. With strong lifting power, smooth operation, and efficient fuel use, they provide a practical and reliable solution for a wide range of material handling tasks, supporting everyday operations.

- 1. Lower Emissions
- 2. Indoor and Outdoor Use
- 3. Cost-effective Running
- 4. Dependable Engine Performance
- 5. Versatile Application Use

## FAST REFUELLING, MAXIMUM UPTIME

LPG forklifts run on easily replaceable gas bottles, allowing quick fuel changes and minimal downtime. A single cylinder can last a full shift depending on usage, making them ideal for busy operations. Empty bottles can be swapped in minutes, keeping productivity moving without long refuelling delays.



LPG

### Did You Know?

LPG forklifts deliver clean, consistent performance and can be quickly refuelled in just minutes, helping reduce downtime and keep operations running smoothly and efficiently.



## FAQs Not sure about LPG? Here are some common questions.

<p><b>What are LPG forklifts best used for?</b></p>	<p><b>Are LPG forklifts cost-effective to run?</b></p>	<p><b>Do LPG forklifts work in cold weather?</b></p>	<p><b>What emissions do LPG forklifts produce?</b></p>
<p>Indoor and outdoor flexible use.</p>	<p>Yes. Low fuel costs and fast refuelling boost efficiency.</p>	<p>Yes. They maintain steady performance in low temperatures.</p>	<p>Lower than diesel, but indoor ventilation is still needed.</p>



# ELECTRIC FORKLIFTS

Our second-hand electric forklifts provide an efficient, low-emission solution for indoor and warehouse environments. Carefully checked and prepared for operation, they offer reliable performance across a range of applications. Browse our current stock online or contact our sales team for more information.



## 5 Reasons to Choose Electric

Electric forklifts deliver efficient, low-noise performance ideal for indoor environments. With smooth operation, precise handling, and zero emissions, they provide a reliable solution for a wide range of material handling tasks and day-to-day operations.

1. Zero Emissions

2. Low Noise Operation

3. Low Running Costs

4. Smooth Control

5. Ideal for Indoor Use

## LOW EMISSIONS, LOWER RUNNING COSTS

Electric forklifts offer a clean, efficient solution for material handling. With zero exhaust emissions, they improve indoor air quality and support environmental compliance. Lower energy use, fewer moving parts, and reduced maintenance make them a cost-effective long-term choice.



ELECTRIC

### Did You Know?

Electric forklifts can significantly reduce operating costs over time thanks to lower energy consumption, fewer servicing requirements, and reduced overall maintenance needs.



## FAQs Not sure about Electric? Here are some common questions.

**What are electric forklifts best used for?**

Indoor use in warehouses, retail, and clean environments.

**Are electric forklifts cheaper to run?**

Yes. Lower energy and maintenance costs than diesel or gas.

**Can electric forklifts operate outdoors?**

Yes, on suitable surfaces and in mild conditions.

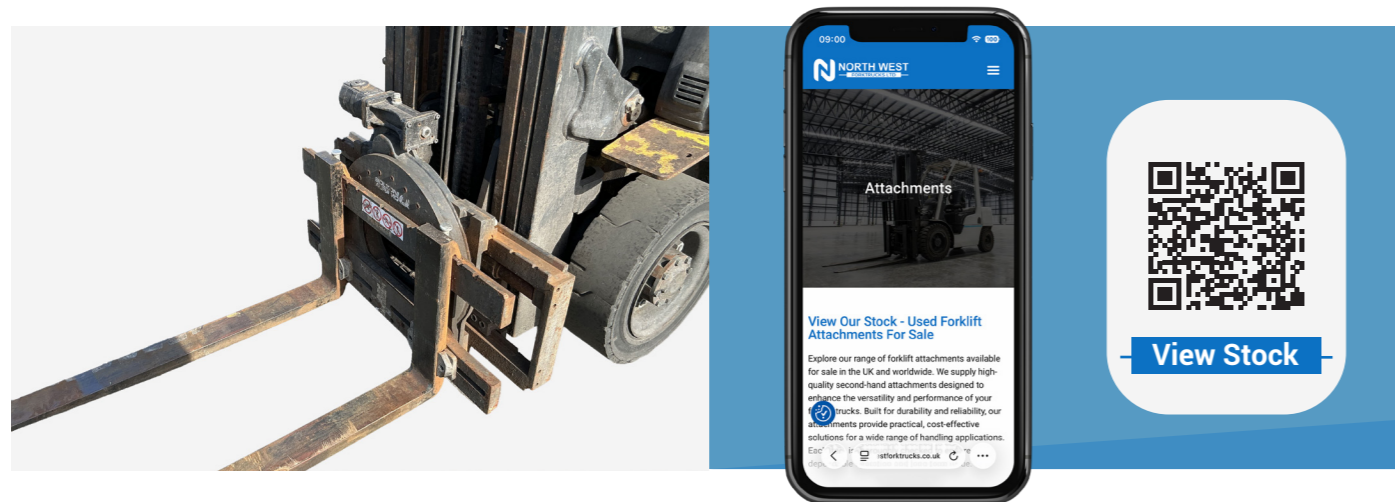
**Are electric forklifts quieter?**

Yes. Low noise improves comfort and workplace conditions.



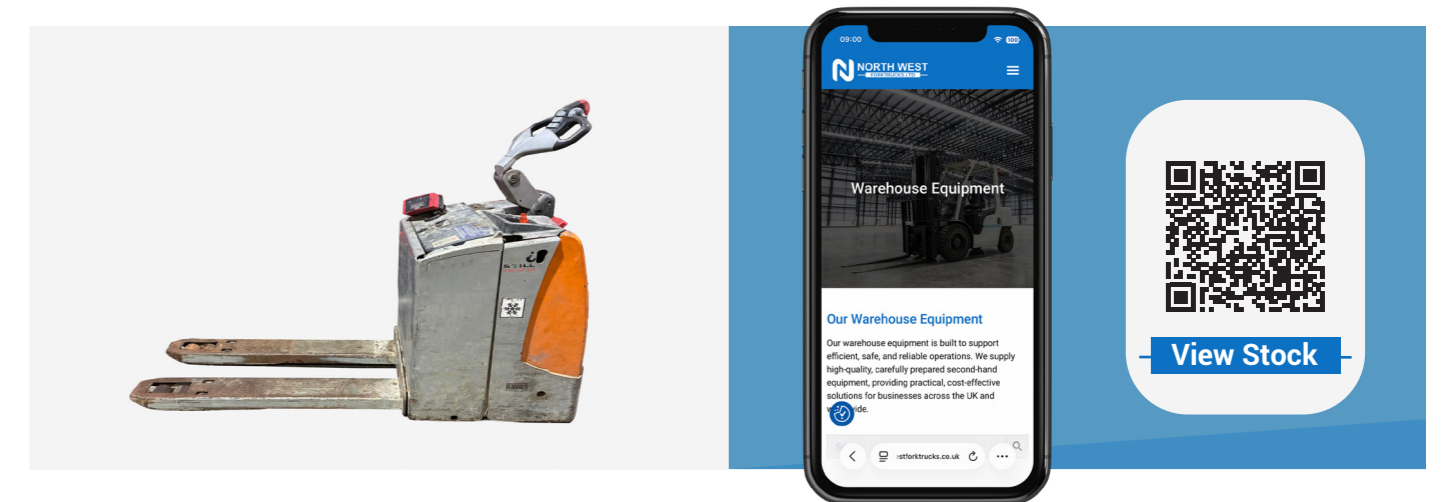
# FORKLIFT ATTACHMENTS

Forklift attachments are designed to expand the versatility of your truck, allowing it to handle a wider range of tasks beyond standard pallet lifting. From side shifters and fork positioners to clamps and specialist handling equipment, attachments help improve efficiency and reduce manual handling. They are ideal for businesses dealing with varied load types, enabling a single forklift to adapt to different applications and maximise productivity.



# WAREHOUSE EQUIPMENT

Warehouse equipment is designed to support everyday operations, helping businesses improve efficiency and maintain smooth workflows. From pallet handling equipment to cleaning solutions and workplace essentials, our range covers a variety of applications. Ideal for warehouses, workshops, and industrial environments, these products provide practical solutions for handling, organisation, and day-to-day tasks.



# ACCESS PLATFORMS

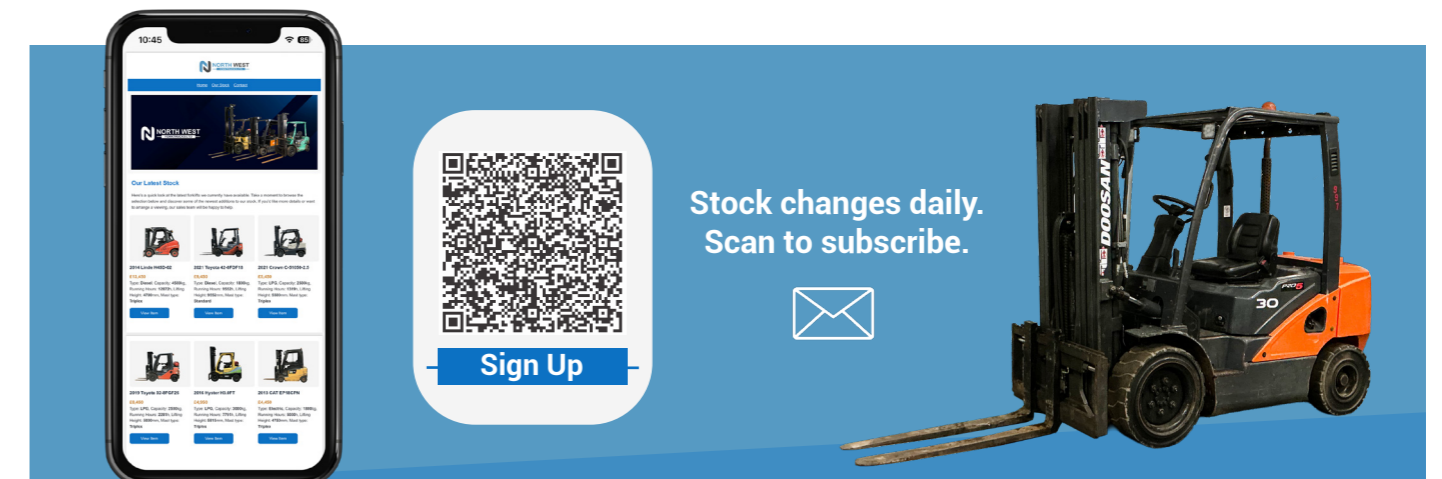
Access platforms provide a safe and reliable solution for working at height across a range of industrial and warehouse applications. Built for stability and durability, they are ideal for maintenance, inspections, and general elevated tasks. Our carefully prepared second-hand platforms are fully inspected to ensure dependable performance, offering a practical and cost-effective option for businesses that need safe access without compromising on quality.



# SUBSCRIBE TO OUR NEWSLETTER

GET THE LATEST UPDATES STRAIGHT TO YOUR INBOX

Stay one step ahead with the latest updates from North West Forktrucks. By subscribing to our newsletter, you'll receive our Weekly Stock Picks straight to your inbox, keeping you up to date with the newest forklifts and equipment as they arrive in our yard, so you can easily keep track of our latest stock.



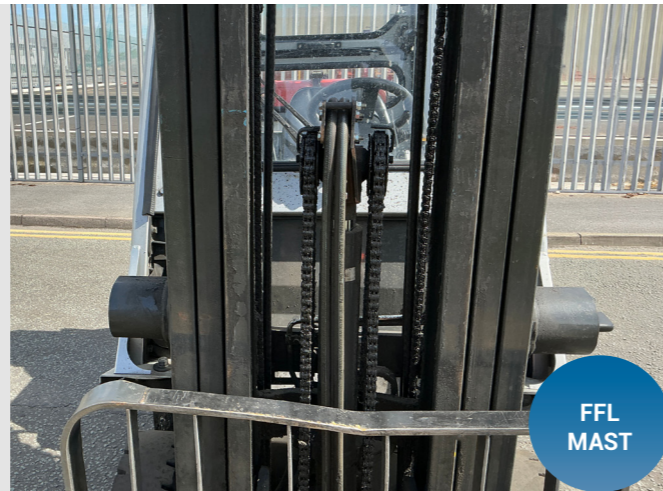
# FORKLIFT OPTIONS

Selecting the right forklift is about more than lifting capacity. Features such as mast type, side shift, and hydraulic functions can impact productivity, manoeuvrability, and suitability for different working environments. Understanding the options available can help you choose the right machine for your application.

## Mast Types

### Choosing the Right Lift Configuration

Forklift masts come in different configurations to suit various applications. A standard mast extends as the forks rise, making it ideal for general use. A Full Free Lift (FFL) mast allows the forks to lift before the mast extends, making it suitable for containers, trailers, and other low-clearance environments.



## Extras

### Choosing the Right Features



Many forklifts include features that improve efficiency and control. Side shift allows forks to move left and right for more precise load positioning. Some machines may also be equipped with fork positioners and additional hydraulic functions, providing greater flexibility for a range of handling applications.

## Tyres

### Choosing the Right Tyre for Your Environment

Forklift tyres are available in different types to suit various environments. Solid tyres are durable and low maintenance, super elastic tyres improve comfort, and pneumatic tyres offer excellent traction on uneven terrain.

# YOUR GLOBAL FORKLIFT PARTNER

We support customers across multiple continents with fast, reliable export services and fully managed logistics. From single machines to multi-truck orders, our team handles everything from documentation to loading, ensuring your equipment arrives safely, efficiently, and on schedule.



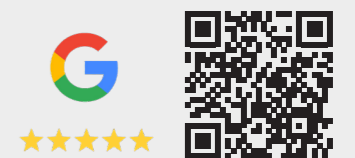
## Reviews

### See What Our Customers Have to Say

#### Trusted for Quality & Service

For over 30 years, companies across the UK and worldwide have trusted North West Forktrucks for reliable equipment and dependable support. Here's what our customers have to say about their experience working with us.

#### Read More Verified Reviews



"Fantastic family run business, we cannot fault their service since day one. Highly recommended."

A&M METALS LIVERPOOL

"Top service, always fast and professional. Forklifts and shovels supplied helped the business greatly"

SOVINI WASTE SOLUTIONS

"Great company to deal with, nothing is ever too much trouble. Overtime become friends more than business associates"

ACT ASBESTOS CONTROL

# ROUGH TERRAIN FORKLIFTS

Rough-terrain forklifts are built with large pneumatic tyres and strong diesel engines that provide reliable traction on uneven or unpaved ground, making them ideal for demanding outdoor environments. This allows them to operate confidently across construction sites, yards, and agricultural settings where standard forklifts would struggle. They are commonly used in industries that require dependable all-terrain performance for safe and efficient material handling.



# REACH STACKERS

Reach stackers are designed to lift and transport exceptionally heavy or oversized loads with precision, using powerful engines and long-reach capabilities. This makes them ideal for ports, docks, and industrial sites where large containers or high-capacity materials need to be moved quickly and safely. They are widely used in operations that rely on consistent heavy-lifting performance to keep workflow running smoothly.



# SIDELoadERS

Sideloaders are designed with a side-lifting platform that allows long materials to be loaded, carried, and unloaded without turning the truck, improving stability in restricted working areas. This makes them particularly effective for handling timber, pipes, and metal profiles where traditional forklifts can struggle to manoeuvre safely. They are frequently used in timber yards, fabrication sites, and specialist warehouses that require secure, efficient movement of long loads.



# FOUR-WAY TRUCKS

Four-way forklifts feature multi-directional steering that allows them to travel forwards, backwards, and sideways, making them highly effective for handling long or bulky loads in confined spaces. This flexibility enables operators to move materials such as timber, steel, and panels with greater control and reduced turning space. They are commonly used in manufacturing and specialist warehousing where precise movement of extended loads is a daily requirement.



# ARTICULATED TRUCKS

Articulated forklifts are designed with a pivoting joint that allows the front and rear of the truck to turn independently, making them ideal for working in very narrow aisles. This flexibility means they can operate in tighter warehouse spaces than traditional forklifts while still handling heavy loads and reaching high racking. They are commonly used in warehouses where maximising storage space is a priority, as they reduce the need for wide aisles without compromising on lifting capability.



# TELEHANDLERS

Telehandlers are versatile machines designed to lift, place, and transport loads across construction sites, agricultural settings, and industrial environments. Featuring a telescopic boom that extends forwards and upwards, they offer excellent reach and lifting capability where conventional forklifts may be limited. Their ability to operate on uneven terrain makes them ideal for handling materials efficiently in demanding outdoor applications.



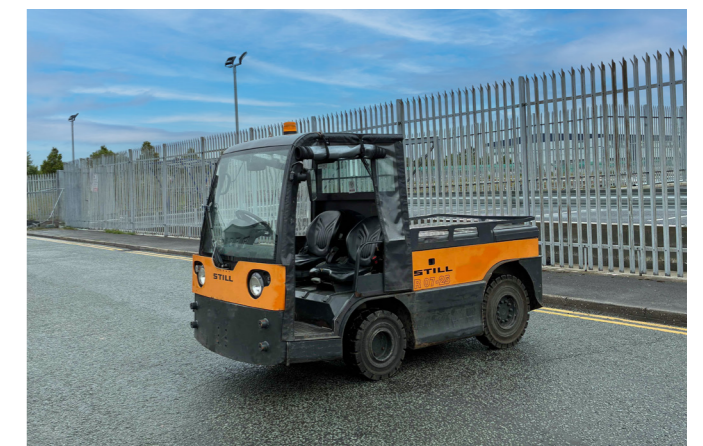
# REACH TRUCKS

Reach trucks are built specifically for warehouse use, with an extendable mast that allows the forks to “reach” into racking. This makes them perfect for high-level storage and narrow aisle operations, where precision and control are essential. They are typically used in distribution centres and indoor storage environments, offering excellent manoeuvrability, stability at height, and efficient handling of palletised goods.



# TOW TUGS

Tow tugs are designed to pull and transport loads efficiently across warehouses, manufacturing facilities, and distribution centres. Rather than lifting goods, they tow trailers, trolleys, and carts, making them ideal for moving multiple loads in a single journey. Their compact design, excellent manoeuvrability, and strong towing capacity help streamline internal logistics, improve productivity, and reduce manual handling in busy working environments.



## Your Trusted Partner in Material Handling

With over 30 years of experience, North West Forktrucks delivers reliable, cost-effective equipment backed by expert support. Whether you're expanding your fleet or replacing a single truck, our team is here to help you find the right solution.

## Get in Touch

P: 0151 922 9245

E: [info@northwestforktrucks.co.uk](mailto:info@northwestforktrucks.co.uk)

W: [www.northwestforktrucks.co.uk](http://www.northwestforktrucks.co.uk)

## Address

56 Farriers Way, Bootle, Liverpool, L30 4XL

## Follow Our Social Media

Become a part of the North West Forktrucks community: follow us on our social media channels (LinkedIn, Facebook, Instagram, YouTube)

## Opening Hours

Monday - Thursday: 8:30 am – 17:00 pm

Friday: 8:00 am – 16:30 pm

